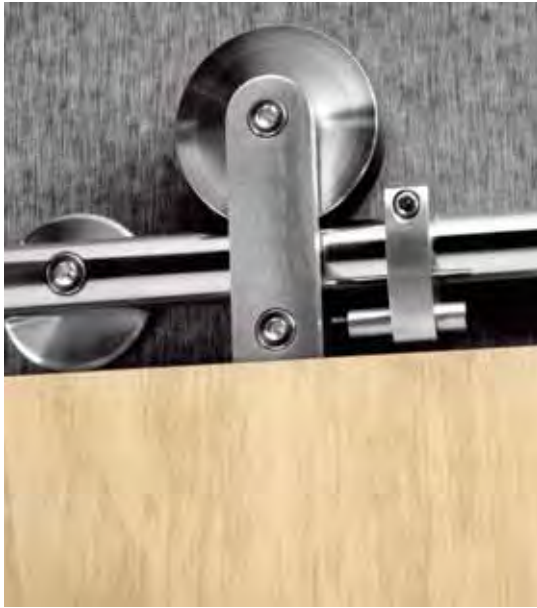


PORTE SCORREVOLI

MOD. CASTORE

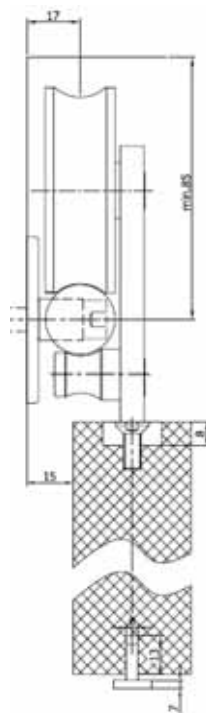
Per pannelli spessore 20-80 mm e peso max. 135 kg



Art. 650.02



Art. 652.01



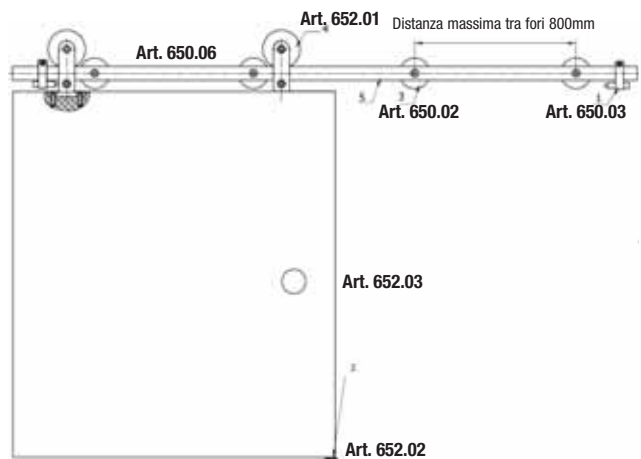
Art. 652: completo 1 anta escluso pannello

Composto da	Descrizione	Dimensioni	Spessore Pannello
2 x 652.01	carrello scorrevole	69,5 mm	20/80
5 x 650.02	fissaggio a parete	-	-
2 x 650.03	finecorsa	-	-
1 x 652.02	guida a pavimento	-	-
1 x 652.03	maniglione	-	20/80
1 x 650.06	barra sostegno	Ø 25	-

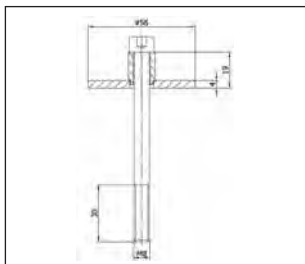
Art. 650.03



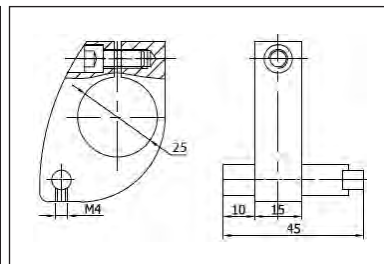
Art. 652.02



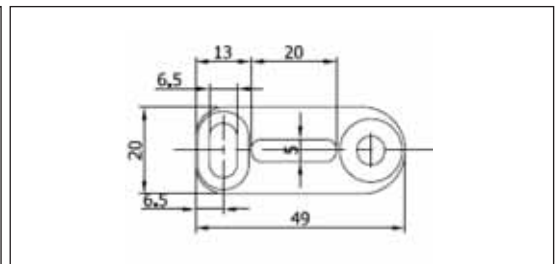
Art. 650.02



Art. 650.03



Art. 652.02



PORTE SCORREVOLI

MOD. SIRIO

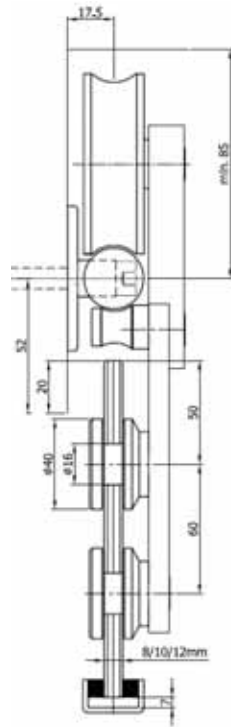
Per pannelli spessore 8-50 mm e peso max. 250 kg



Art. 651.02



Art. 651.01



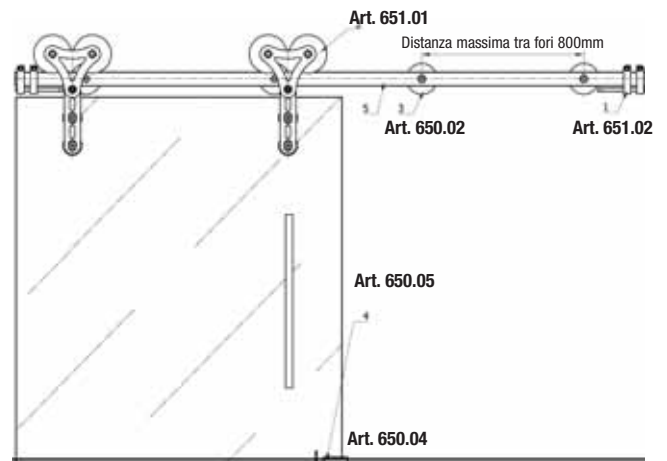
Art. 651: Carrello completo 1 anta escluso vetro

Composto da	Descrizione	Dimensioni	Spessore Vetro
2 x 651.01	carrello scorrevole	69,5 mm	8-10-12
5 x 650.02	fissaggio a parete	-	-
2 x 651.02	finecorsa	-	-
1 x 650.04	guida a pavimento	-	-
1 x 650.05	maniglione	-	8-10-12
1 x 650.06	barra sostegno	Ø 25	-

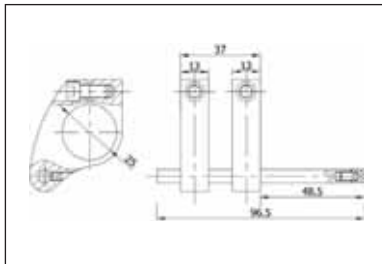
Art. 650.02



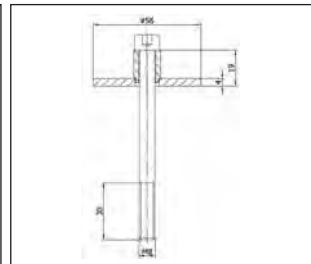
Art. 650.04



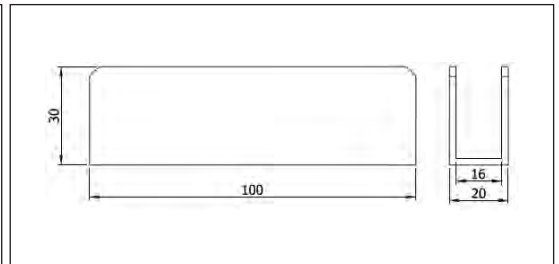
Art. 651.02



Art. 650.02



Art. 650.04



PORTE SCORREVOLI

MOD. ANTARES

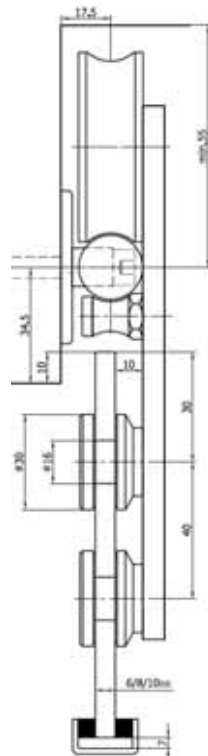
Per pannelli spessore 6-40 mm e peso max. 45 kg



Art. 653.02



Art. 653.01



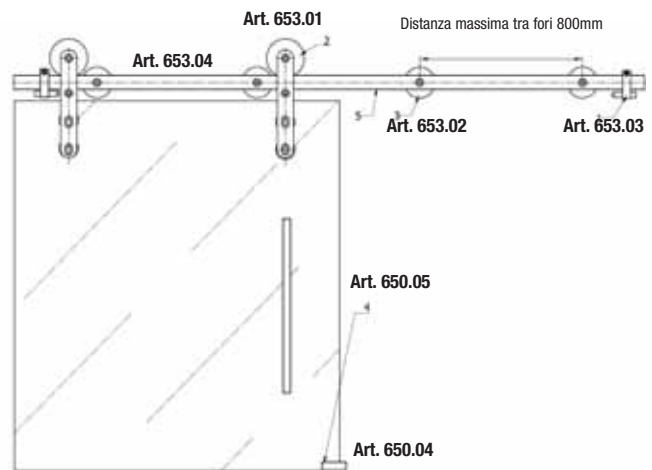
Art. 653: completo 1 anta escluso vetro

Composto da	Descrizione	Dimensioni	Spessore Vetro
2 x 653.01	carrello scorrevole	43 mm	6-8-10
5 x 653.02	fissaggio a parete	-	-
2 x 653.03	finecorsa	-	-
1 x 650.04	guida a pavimento	-	-
1 x 650.05	maniglione	-	8-10-12
1 x 653.04	barra sostegno	Ø 20	-

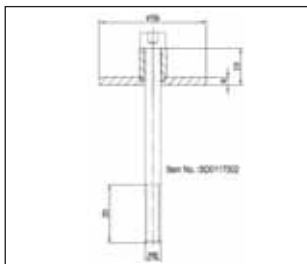
Art. 653.03



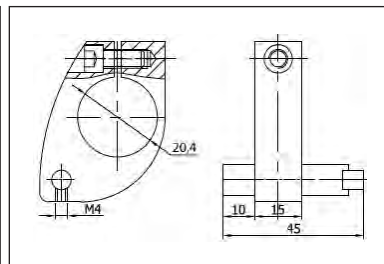
Art. 650.04



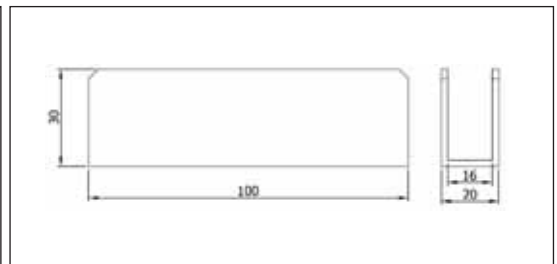
Art. 653.02



Art. 653.03



Art. 650.04



PORTE SCORREVOLI

MOD. POLLUCE

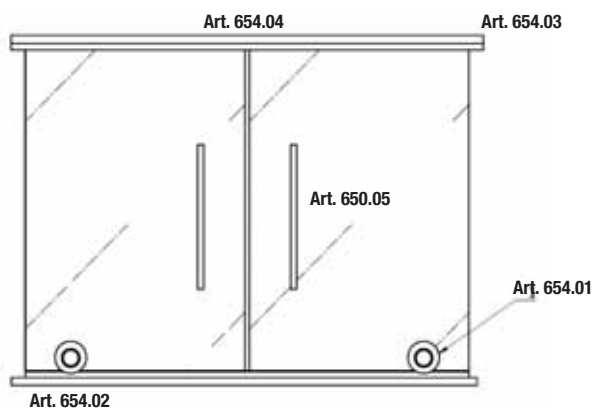
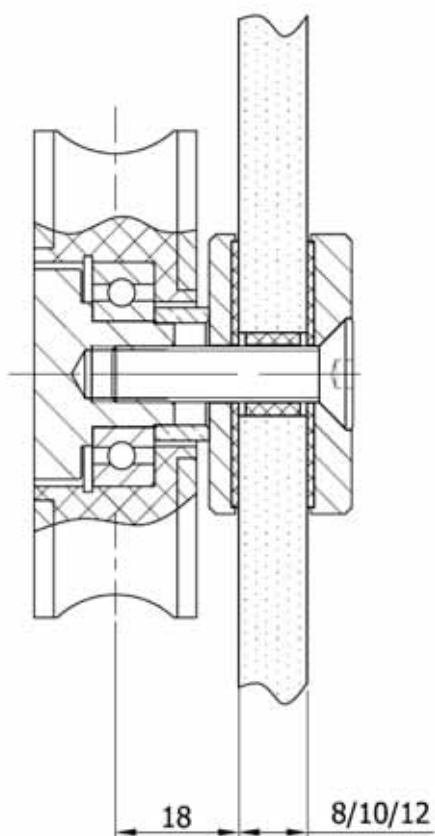
Per pannelli spessore 8-12 mm e peso max. 135 kg



Art. 654.01

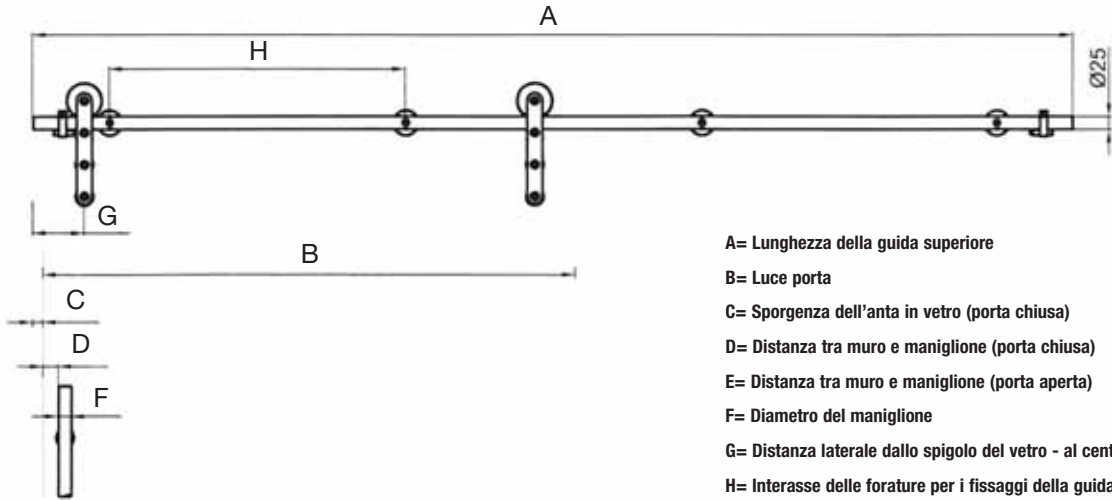
Art. 654: completo 1 anta escluso vetro

Composto da	Descrizione	Dimensioni	Spessore Vetro
2 x 654.01	carrello scorrevole	43 mm	8-10-12
1 x 654.02	guida a pavimento	-	-
2 x 654.03	fincorsa	-	-
1 x 650.05	maniglione	-	8-10-12
1 x 654.04	barra sostegno	-	-



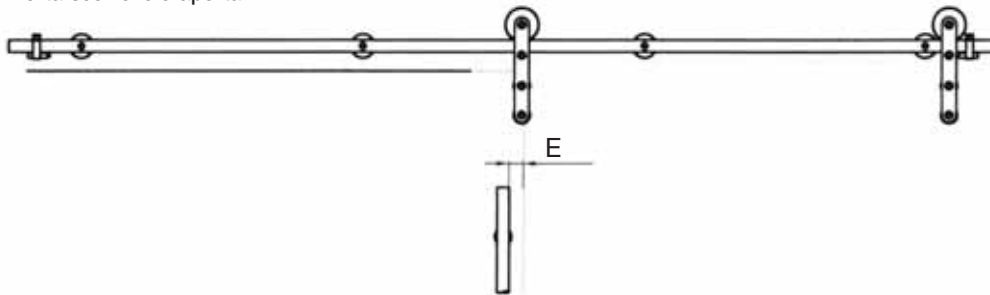
Porta scorrevole con doppio maniglione, asta singola e fissaggi a muro

Porta scorrevole chiusa



- A= Lunghezza della guida superiore
- B= Luce porta
- C= Sporgenza dell'anta in vetro (porta chiusa)
- D= Distanza tra muro e maniglione (porta chiusa)
- E= Distanza tra muro e maniglione (porta aperta)
- F= Diametro del maniglione
- G= Distanza laterale dallo spigolo del vetro - al centro fori
- H= Interasse delle forature per i fissaggi della guida superiore

Porta scorrevole aperta

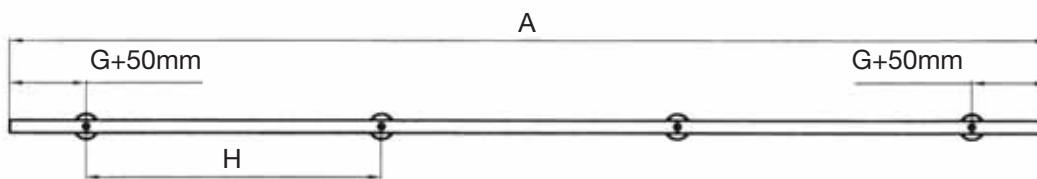


Calcolo: lunghezza totale della guida superiore

$$A = 2x \left[\begin{array}{|c|} \hline B \\ \hline \end{array} \right] + 2x \left[\begin{array}{|c|} \hline C \\ \hline \end{array} \right] - \left[\begin{array}{|c|} \hline D \\ \hline \end{array} \right] - \left[\begin{array}{|c|} \hline F \\ \hline \end{array} \right] - \left[\begin{array}{|c|} \hline E \\ \hline \end{array} \right] = \begin{array}{|c|} \hline \text{Risultato} \\ \hline \end{array} \begin{array}{|c|} \hline \text{Ergebnis} \\ \hline \end{array}$$

Esempio: $2x \left[\begin{array}{|c|} \hline 900\text{mm} \\ \hline \end{array} \right] + 2x \left[\begin{array}{|c|} \hline 20\text{mm} \\ \hline \end{array} \right] - \left[\begin{array}{|c|} \hline 30\text{mm} \\ \hline \end{array} \right] - \left[\begin{array}{|c|} \hline 25\text{mm} \\ \hline \end{array} \right] - \left[\begin{array}{|c|} \hline 25\text{mm} \\ \hline \end{array} \right] = \left[\begin{array}{|c|} \hline 1770\text{mm} \\ \hline \end{array} \right]$

Interasse delle forature per i fissaggi della guida superiore



	Lunghezza porta (mm) Türbreite (mm)																							
	700			800			900			1000			1100			1200			1300			1400		
	Spessore del vetro (mm) Glasdicke (mm)			Spessore del vetro (mm) Glasdicke (mm)			Spessore del vetro (mm) Glasdicke (mm)			Spessore del vetro (mm) Glasdicke (mm)			Spessore del vetro (mm) Glasdicke (mm)			Spessore del vetro (mm) Glasdicke (mm)			Spessore del vetro (mm) Glasdicke (mm)			Spessore del vetro (mm) Glasdicke (mm)		
1900	770	710	670	770	720	670	770	710	670	760	710	670	760	700	660	750	700	650	740	690	650	730	680	640
2000	750	700	650	750	700	660	750	690	650	740	690	650	740	680	640	730	680	640	720	670	630	720	660	630
2100	730	680	640	730	680	640	730	680	640	730	670	630	720	670	630	710	660	620	710	660	620	700	650	610
2200	710	660	620	710	660	620	710	660	620	710	660	620	700	650	610	700	650	610	690	640	600	680	630	590
2300	690	640	610	700	650	610	700	650	610	690	640	600	690	640	600	680	630	600	680	630	590	670	620	580
2400	680	630	590	680	630	590	680	630	590	680	630	590	670	620	590	670	620	580	660	610	580	660	610	560
2500	660	610	580	670	620	580	670	620	580	660	620	580	660	610	580	650	610	570	650	600	570	640	600	550

Interassi massime tra le forature per i fissaggi della guida superiore. Vi chiediamo gentilmente di contattare il nostro ufficio tecnico per porte a doppia anta e/o a misura.