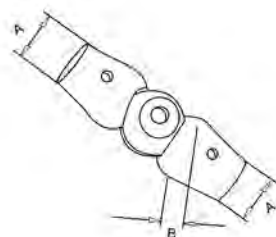
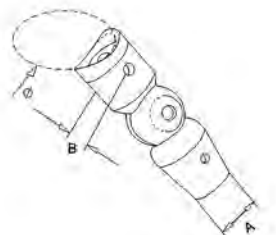


PARTICOLARI IN ACCIAIO INOX

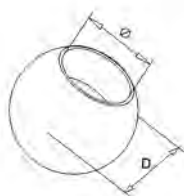
FISSAGGI PER TRAVERSA



Art.	A	B
143	10	22
143.01	12	22



Art.	Ø	A	B
144	33,7	10	22
144.01	33,7	12	22
144.02	42,4	10	22
144.03	42,4	12	22
144.04	≠	10	22
144.05	≠	12	22



Art.	Ø	D
145	10	20
145.01	12	20
145.02	10	25
145.03	12	25



Art.	Ø	A	B	C
146	33,7	10	22	20
146.01	42,4	10	22	20
146.03	33,7	12	22	20
146.04	42,4	12	22	20
146.02	≠	10	22	20
146.05	≠	12	22	20



SINISTRO



Art.	Ø	A	B	C
147	33,7	10	22	20
147.02	42,4	10	22	20
147.06	33,7	12	22	20
147.08	42,4	12	22	20
147.04	≠	10	22	20
147.10	≠	12	22	20



DESTRO

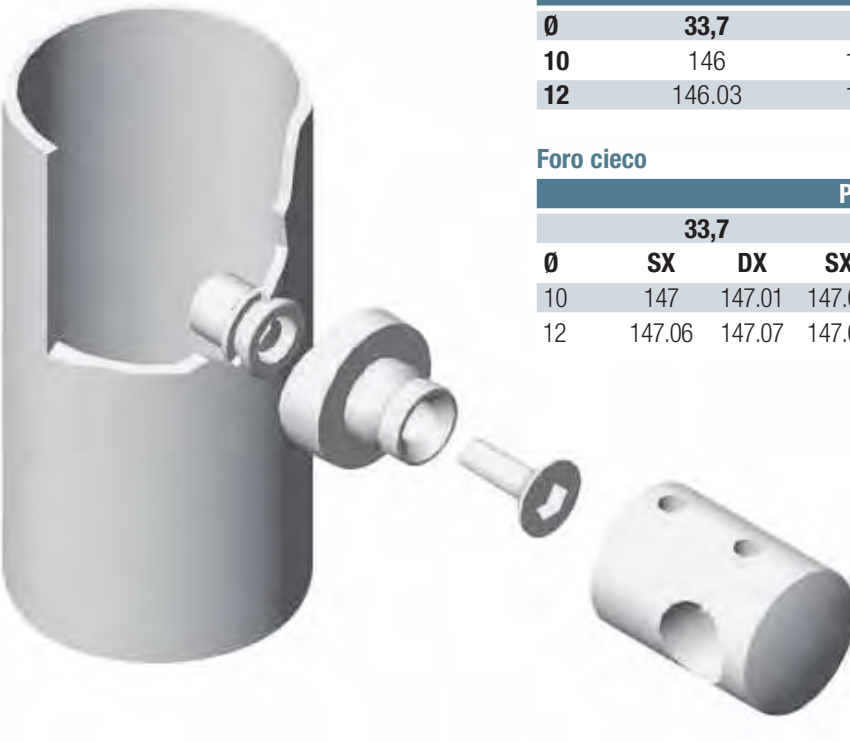


Art.	Ø	A	B	C
147.01	33,7	10	22	20
147.03	42,4	10	22	20
147.07	33,7	12	22	20
147.09	42,4	12	22	20
147.05	≠	10	22	20
147.11	≠	12	22	20

PARTICOLARI IN ACCIAIO INOX
FISSAGGI PER TRAVERSA



PARTICOLARI IN ACCIAIO INOX
FISSAGGI PER TRAVERSA



Foro continuo

Ø	Per tubo		
	33,7	42,4	≠
10	146	146.01	146.02
12	146.03	146.04	146.05

Foro cieco

Ø	Per tubo					
	33,7		42,4		≠	
	SX	DX	SX	DX	SX	DX
10	147	147.01	147.02	147.03	147.04	147.05
12	147.06	147.07	147.08	147.09	147.10	147.11

